



URBAN
base |||||

URBAN

base //

The URBANbase texture CD-ROM enables the user to do a very quick and realistic lighting setup for 3D-scenes. No more trouble with hours of tweaking to get a realistic lighting, just open and render with your preferred application (the application must support the .hdr-format).

Most 3D-applications are supporting HDR images natively or with the help of a plug-In.

With the new HDRview application (Windows only) the user is able to view the Sachform HDR images within a full flavoured OpenGL-3D-engine. Users with Geforce FX based graphics adapters have the advantage of the realtime exposure control which is a unique feature worldwide.

Content:

- Short introduction to the world of HDR
- 40 different settings as High-Resolution HDR images 4000x2000 (color/monochrome + blurred version -> 160 HDR images) as zipped archives
- each HDR also as High-Resolution Tiff (LZW-compressed) 4000x2000
- HDRview V 1.0 (WIN)

System requirements for the HDR database:

- HDR-capable applications or application with HDR-capable plug-In
- Unzip-application which is capable of decompressing ZIP-archives

System requirements for HDRview V 1.0 (WIN):

- Microsoft indows 2000|SP3 or Microsoft Windows XP
- Geforce FX based graphics adapter (only needed for the realtime exposure feature)



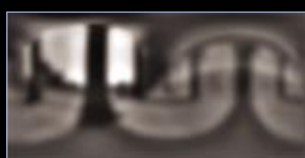
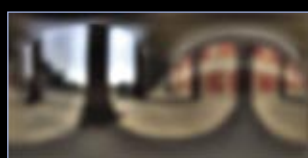
<http://www.sachform.de>



Color HDR-Image (4000x2000)



Greyscale HDR-Image (4000x2000)



Greyscale HDR-Image (4000x2000)

- 40 different Locations
- Seamless full spherical 360°-Panoramas
- Resolution: 4000 x 2000 pixels
- 96 Bit HDRIs (32 Bit / channel)
- HDRview V1.0 viewer (Windows based)
- Html-based database structure



Sample-Images rendered with URBANbase HDR-Panoramas



HDR 01 – Color

HDR 01 – Grey



HDR 02 – Color

HDR 02 – Grey



HDR 03 – Color

HDR 03 – Grey



HDR 04 – Color

HDR 04 – Grey



HDR 05 – Color

HDR 05 – Grey



HDR 06 – Color

HDR 06 – Grey



HDR 07 – Color

HDR 07 – Grey



HDR 08 – Color

HDR 08 – Grey



HDR 09 – Color

HDR 09 – Grey



HDR 10 – Color

HDR 10 – Grey



HDR 11 – Color

HDR 11 – Grey



HDR 12 – Color

HDR 12 – Grey



HDR 13 – Color

HDR 13 – Grey



HDR 14 – Color

HDR 14 – Grey



HDR 15 – Color

HDR 15 – Grey



HDR 16 – Color

HDR 16 – Grey



HDR 17 – Color

HDR 17 – Grey



HDR 18 – Color

HDR 18 – Grey



HDR 19 – Color

HDR 19 – Grey



HDR 20 – Color

HDR 20 – Grey



HDR 21 – Color

HDR 21 – Grey



HDR 22 – Color

HDR 22 – Grey

Page 06



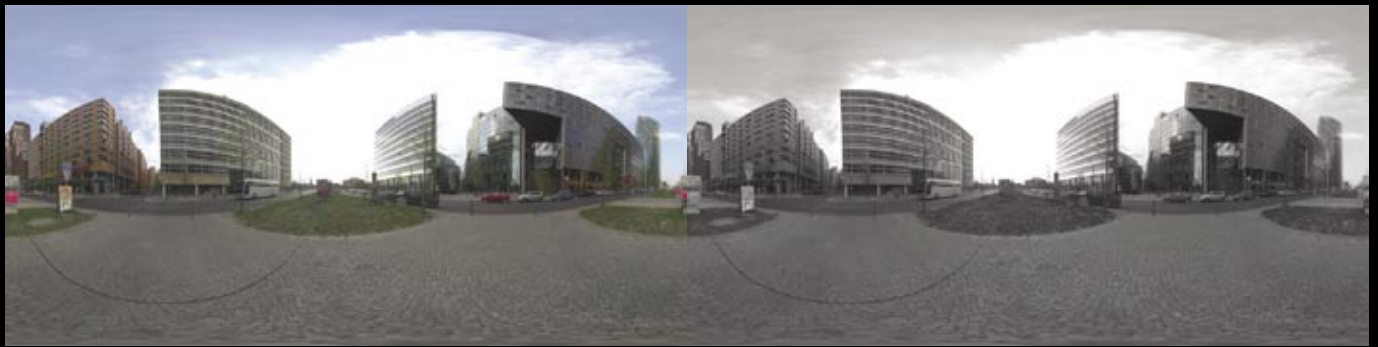
HDR 23 – Color

HDR 23 – Grey



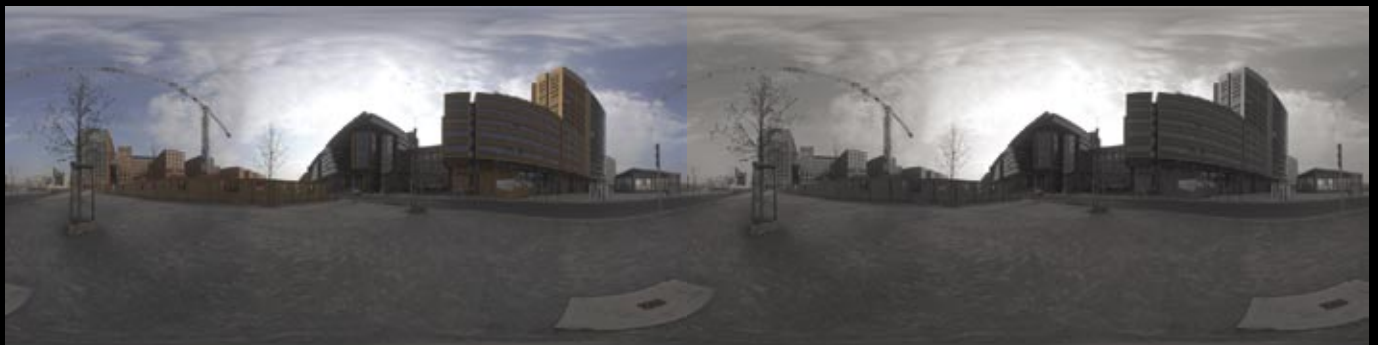
HDR 24 – Color

HDR 24 – Grey



HDR 25 – Color

HDR 25 – Grey



HDR 26 – Color

HDR 26 – Grey



HDR 27 – Color

HDR 27 – Grey



HDR 28 – Color

HDR 28 – Grey



HDR 29 – Color

HDR 29 – Grey



HDR 30 – Color

HDR 30 – Grey



HDR 31 – Color

HDR 31 – Grey



HDR 32 – Color

HDR 32 – Grey



HDR 33 – Color

HDR 33 – Grey



HDR 34 – Color

HDR 34 – Grey



HDR 35 – Color

HDR 35 – Grey



HDR 36 – Color

HDR 36 – Grey



HDR 37 – Color

HDR 37 – Grey



HDR 38 – Color

HDR 38 – Grey



HDR 39 – Color

HDR 39 – Grey



HDR 40 – Color

HDR 40 – Grey